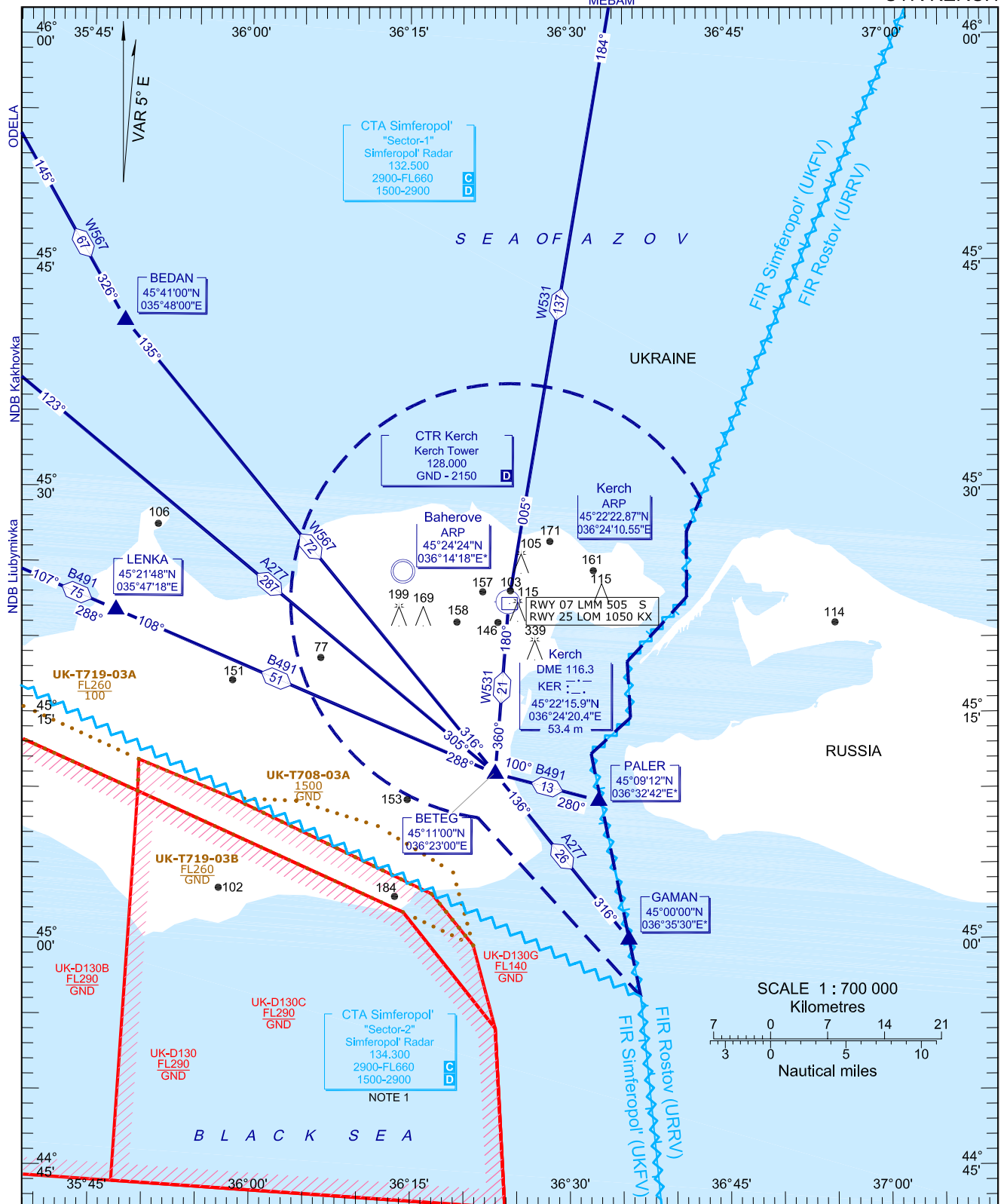


ARRIVAL, DEPARTURE AND TRANSIT ROUTES

25 SEP 2008
CTR KERCH

AREA CHART-ICAO



CHANGE: WGS-84

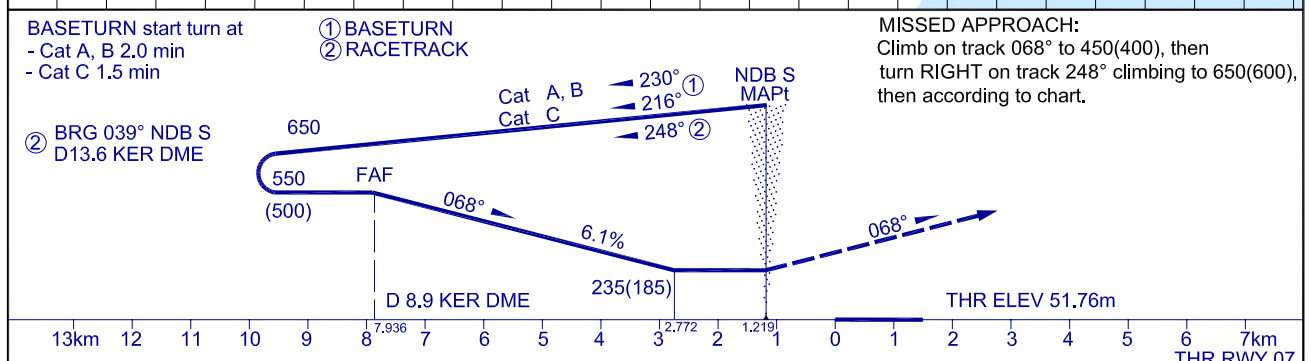
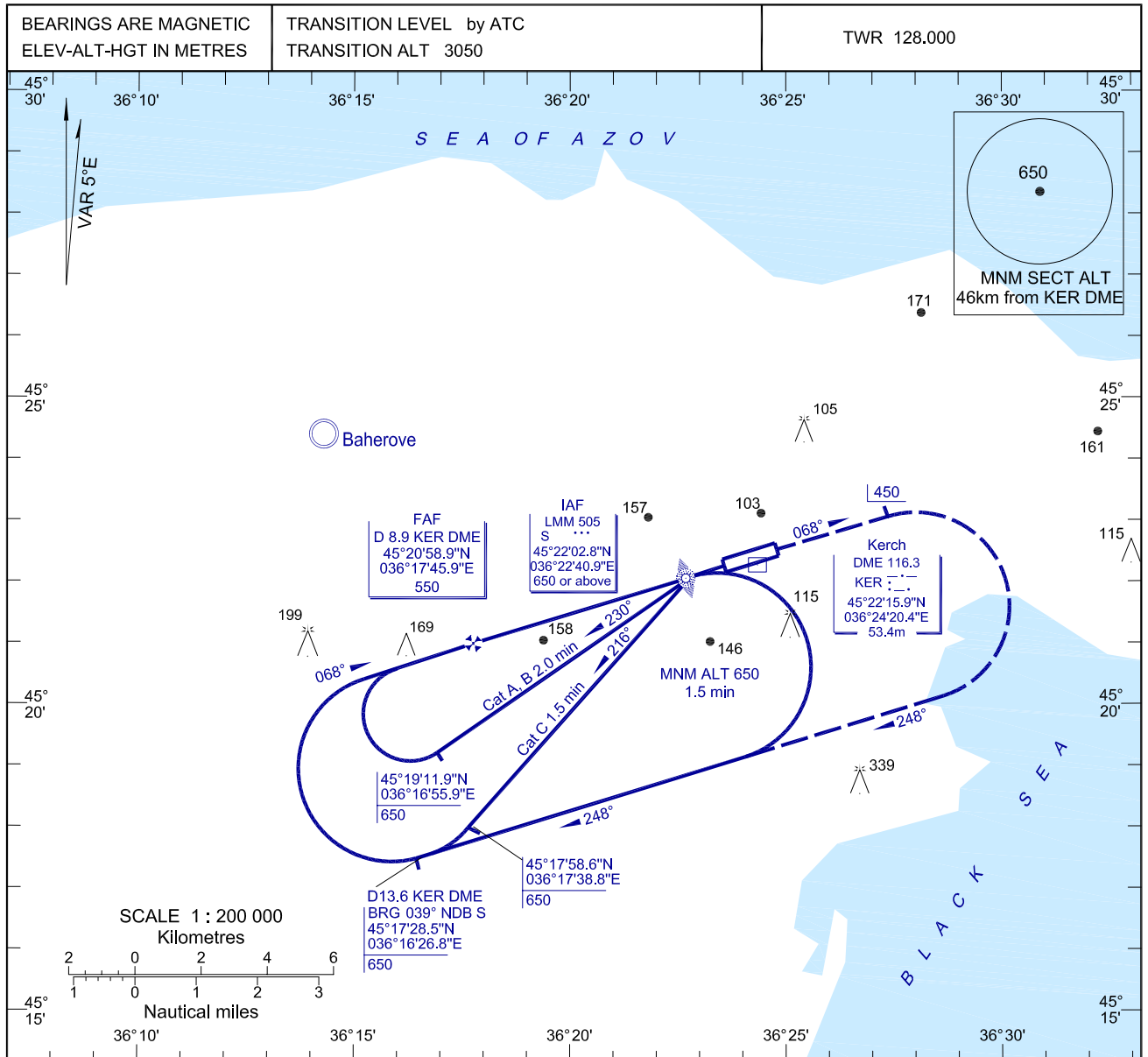
NOTE:
1. Over terrain which higher than 900m. CTA established from 600m. above ground up to 2900m

BEARINGS AND TRACKS ARE MAGNETIC
ALTITUDES AND ELEVATIONS ARE IN METRES
DISTANCES ARE IN KILOMETRES

INSTRUMENT APPROACH CHART (IAC)-ICAO

AD ELEV 52.3m

25 SEP 2008
KERCH
NDB RWY 07



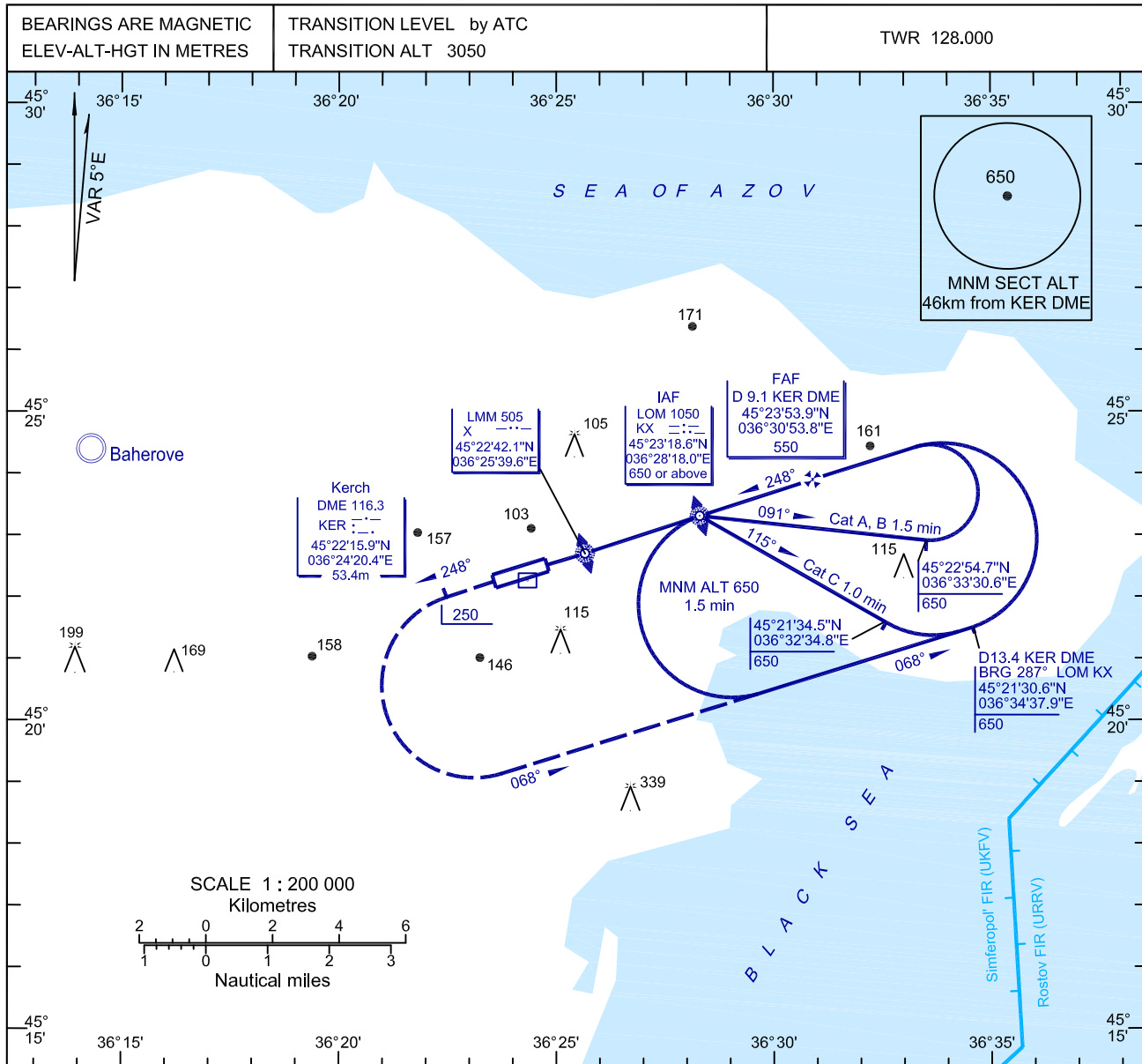
OCA/H		A	B	C	D	NOTE:	
Straight-in Approach	NDB S	235(185)	235(185)	235(185)	--		
Circling		250(200)	250(200)	460(410)	--		
GROUND SPEED	km/h	150	180	210	240	270	300
FAF-MAPT 6717m	min:s	2.41	2.14	1.55	1.41	1.30	1.21
RATE OF DESCENT	m/s	2.5	3.1	3.6	4.1	4.6	5.1

CHANGE: WGS-84

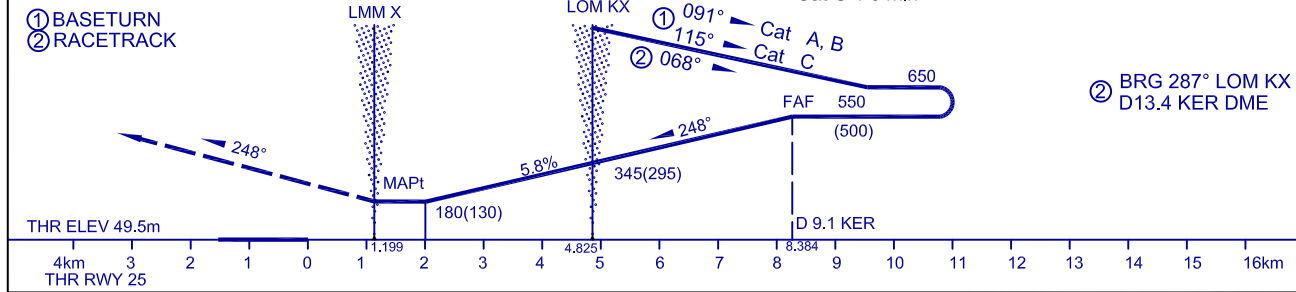
25 SEP 2008
KERCH
NDB RWY 25

INSTRUMENT
APPROACH CHART (IAC)-ICAO

AD ELEV 52.3m



MISSED APPROACH: Climb on track 248° to 250(200), then turn LEFT on track 068° climbing to 650(600), then according to chart.
 BASETURN start turn at
 - Cat A, B 1.5 min
 - Cat C 1.0 min



NOTE:
 ① BASETURN
 ② RACETRACK
 ② BRG 287° LOM KX
 D13.4 KER DME

CHANGE: WGS-84